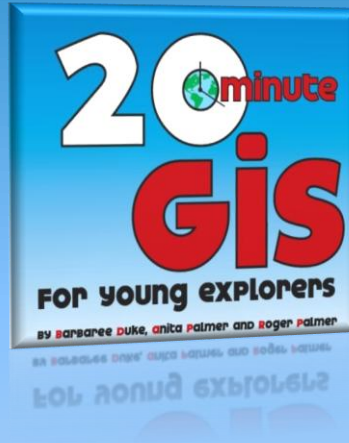


20 Minute GIS

for Young Explorers

with Barbaree Duke (and Anita Palmer)

Because Classroom Teachers...



- Want to add geospatial elements to their classroom.
- May have only one computer in the classroom.
- Have very little time in computer lab.
- Need to augment key concepts.
- Have minimal technology skills.
- Have minimal GIS skills.
- Are not permitted to use Google Earth, but want a virtual globe experience for students.
- Have just 20 minutes to explore new technology.

We created 20 Minute GIS!

GIS Tool



Free Virtual Globe Software from ESRI
<http://www.esri.com/arcgisexplorer>

Search ArcGIS Online

The image shows two overlapping screenshots of the ArcGIS Online interface. The top screenshot shows the navigation bar with 'Show: All Content' circled in red. The search bar contains '20 minute GIS' and a dropdown menu is open, also with 'Search All Content' circled in red. The bottom screenshot shows the search results page for '20 minute GIS', displaying 15 results. The results list includes 'Breakfast', 'grid', 'joburg', and 'World Time Zones'. The 'Breakfast' result has a thumbnail image of a map of the United States. The 'grid' and 'joburg' results have 'No image available' placeholders. The 'World Time Zones' result has a placeholder image. The interface includes navigation links like 'Resource Center', 'GALLERY', 'MAP', 'GROUPS', and 'MY CONTENT'. A sidebar on the left shows 'All Results' with sub-categories: Maps, Applications, and Tools. A 'Related Searches' section is also visible.

Resource Center Show: All Content Barbaree Duke Notifications Help Sign Out

AP GROUPS MY CONTENT 20 minute GIS Search All Content

ArcGIS BETA GALLERY MAP GROUPS MY CONTENT 20 minute GIS

Search Results

Show 15 results for '20 minute GIS' [relevance](#) [highest rated](#) [most viewed](#) [recent](#)

All Results
Maps
Applications
Tools

Breakfast
These thematic representations of breakfast foods sources are created from the agricultural census data available at National Atlas(www.nationalatlas.gov) from USGS.
Layer Package by baduke (last modified: April 29, 2010)
☆☆☆☆☆ (0 ratings, 0 comments)

grid
Explorer Map by baduke (last modified: February 25, 2010)
☆☆☆☆☆ (0 ratings, 0 comments)

joburg
Explorer Map by baduke (last modified: March 19, 2010)
☆☆☆☆☆ (0 ratings, 0 comments)

World Time Zones
This layer presents time zones of the world. The layer

More Information
What types of items can I find here?
Advanced search options
Finding items that work in ArcGIS Desktop

Related Searches
Find items published by ESRI related to "20 minute GIS"
Find groups related to "20 minute GIS"

<http://www.arcgis.com>

Ready-to-Use Activities

Plus all the
ancillary materials
for successful
implementation!

Tic-Tac-Toe, Where Can You Go?

INTRODUCTION

Do you like to play Tic-Tac-Toe? Our planet is one big game board...a system of lines that are carefully numbered so that we can pinpoint where we are on the grid. The earth's grid system is known as latitude and longitude coordinates. Curiously, it's related to something we do in math class called coordinates where each point is assigned a location (x, y) . On the globe, y is our latitude (north or south) and x is our longitude (east or west) that we represent as N, S, E, and W. Let's look at the globe and find the connections between math and geography!

INSTRUCTIONS

Launch ArcGIS Explorer 900.

Click the **globe** button, **open grid.nmf**. There is a grid system on the globe. The yellow lines help us navigate. Move the globe around to Africa. The two lines cross each other. As that point where they intersect, the coordinates are $(0, 0)$.

Look at the labels and **answer Question 1 & 2**.

Double-click on 30N 90W in the Contents window.

Answer Question 3.

Double-click on 30S 90W in the Contents window.

Answer Question 4.

Double-click on 30N 90E in the Contents window.

Answer Question 5.

Double-click on 30S 90E in the Contents window.

Use the **measure tool** to discover how many miles this spot is from land.

Answer Question 6.

Change the map to 2D. Double-click "Base Map" in Contents. **Answer Question 7.**

QUESTIONS

1. What is the line's name that separates North from South?
2. What is the line's name that separates East from West?
3. What city are you nearest at **30N 90W**? What feature is labeled near this location?
4. Where are you at **30S 90W**? What country are you nearest?
5. What is the geographic feature at **30N 90E**? What country are you in?
6. Where are you at **30S 90E**? How far is the closest land?
7. What shape do these points form?

Name: _____ Class: _____ Date: _____

Tic Tac Toe, Where Can You Go? Student Answer Sheet

1. What is the line's name that separates North from South?
2. What is the line's name that separates East from West?
3. What city are you nearest at **30N 90W**? What feature is labeled near this location?
4. Where are you at **30S 90W**? What country are you nearest?
5. What is the geographic feature at **30N 90E**? What country are you in?
6. Where are you at **30S 90E**? How far is the closest land?
7. What shape do these points form?

Extras:

- Teacher Instructions
- Answer Keys
- National, Texas and Virginia Standards Correlations
- Got an hour? Activity Extensions included!
- How-to Videos

Coordinate Systems

Time Zones & Inequalities

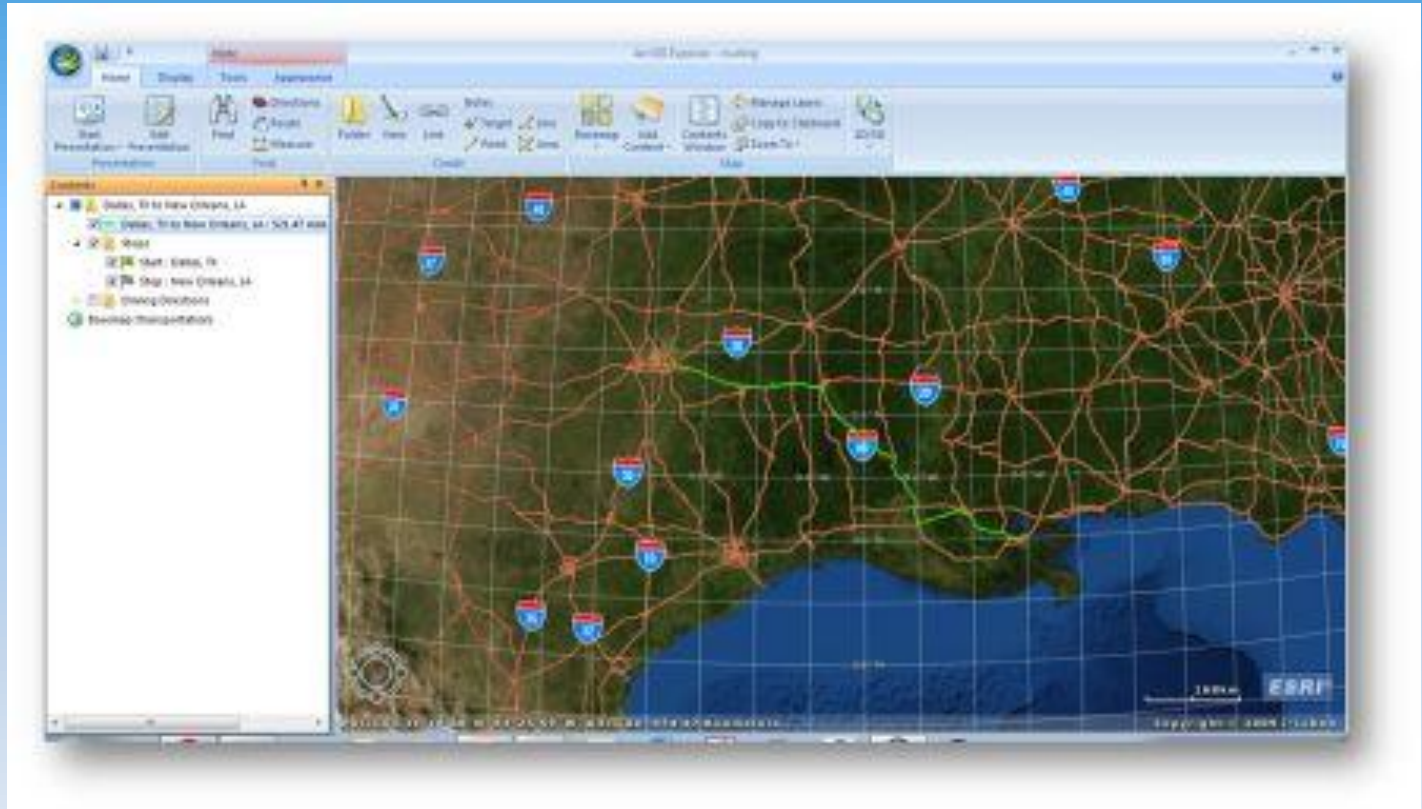
Routing & Measuring

MATH

Tic Tac Toe, Where Can You Go?



Time Travelling



Biomes

Rivers

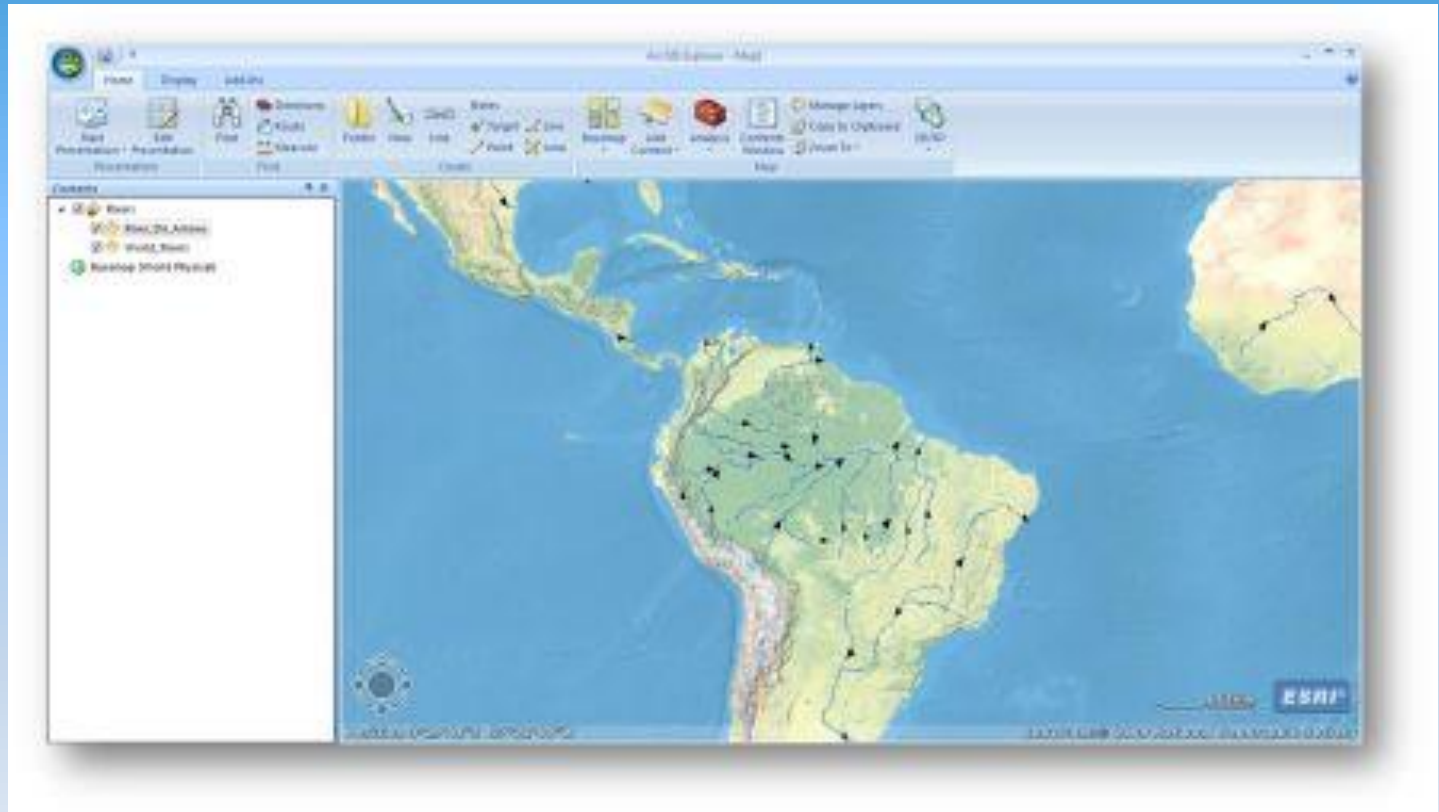
Food web

SCIENCE

Home Sweet Biome



Going with the Flow?



Don't Eat Me!



Adventures in the Red Book

The Red Book

Earth: Poetry in Motion

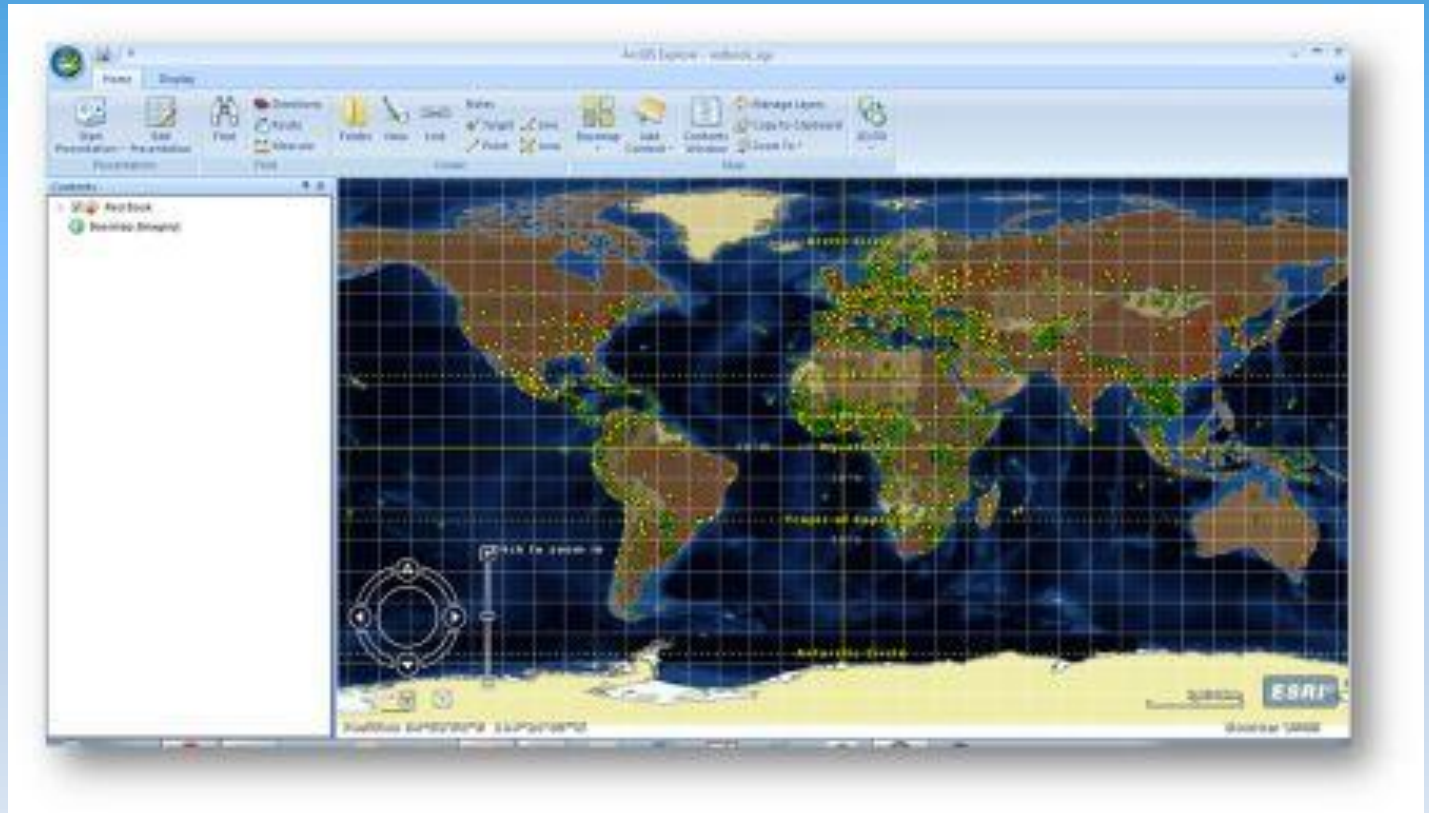
“Awesome Forces”

Somewhere in the World

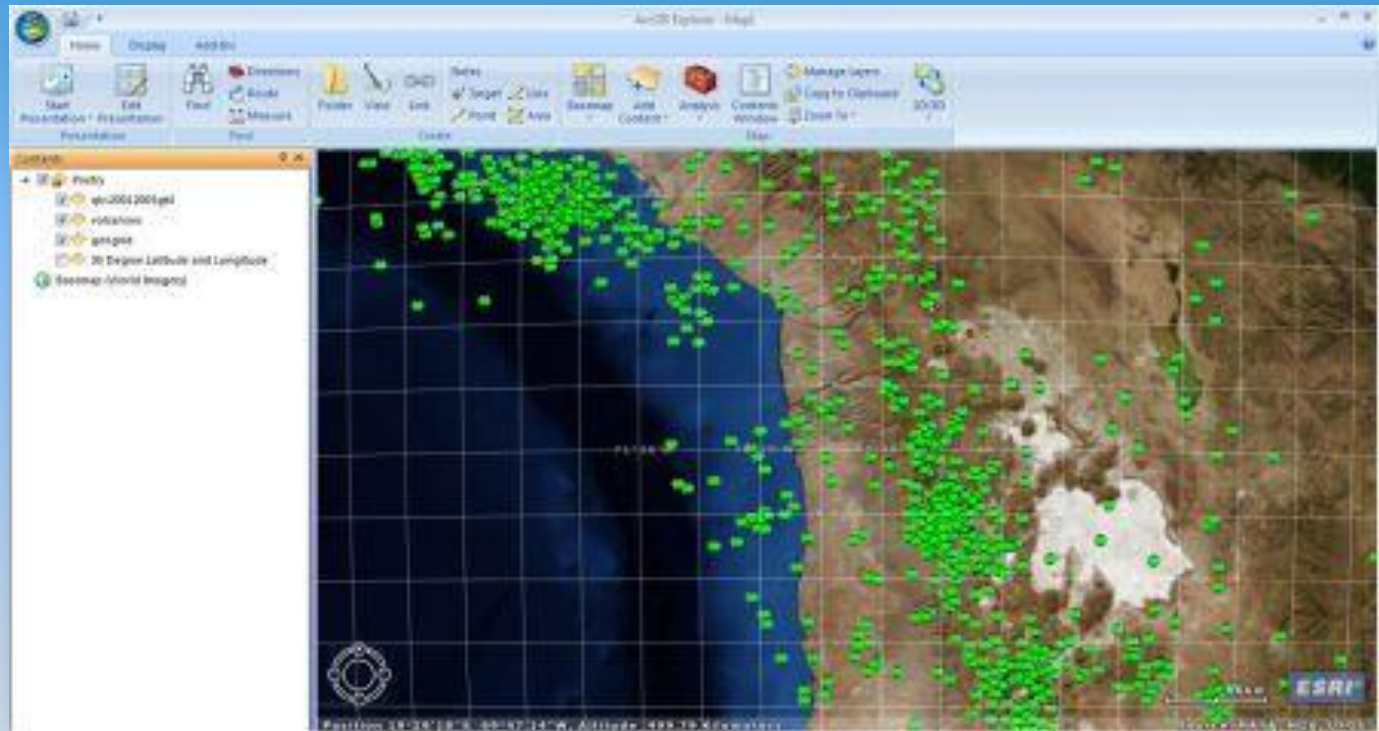
Somewhere in the World Right Now

ENGLISH LANGUAGE ARTS

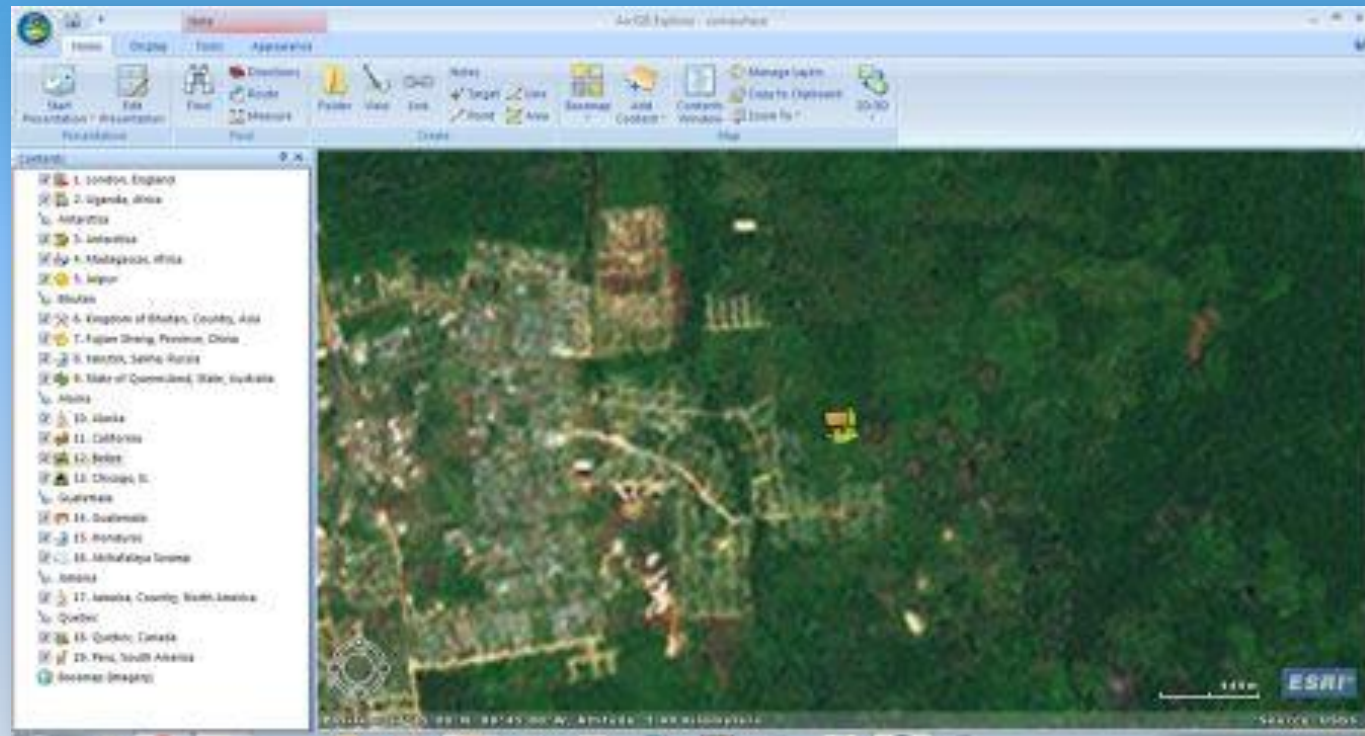
Adventures in the Red Book



Earth: Poetry in Motion



Somewhere in the World



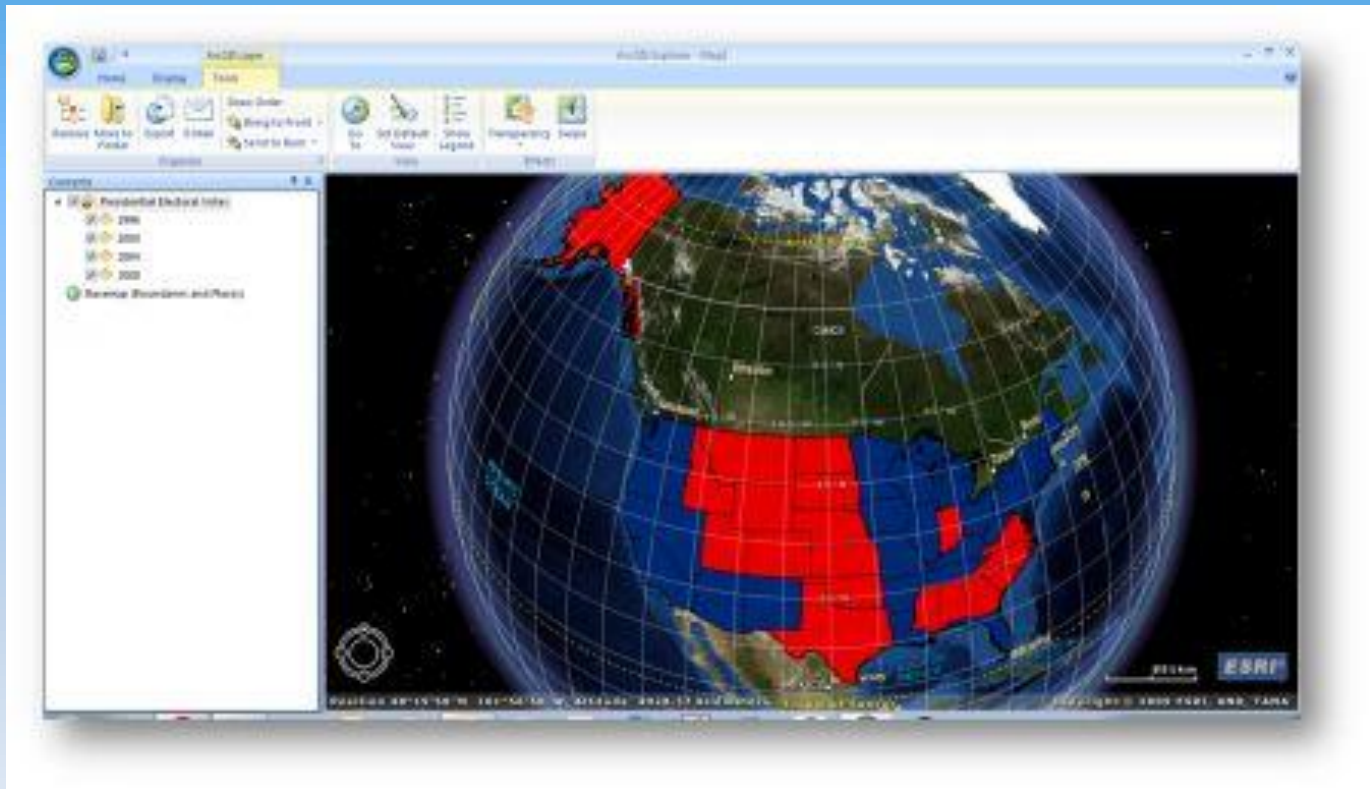
Voting Trends

Pirates' Havens

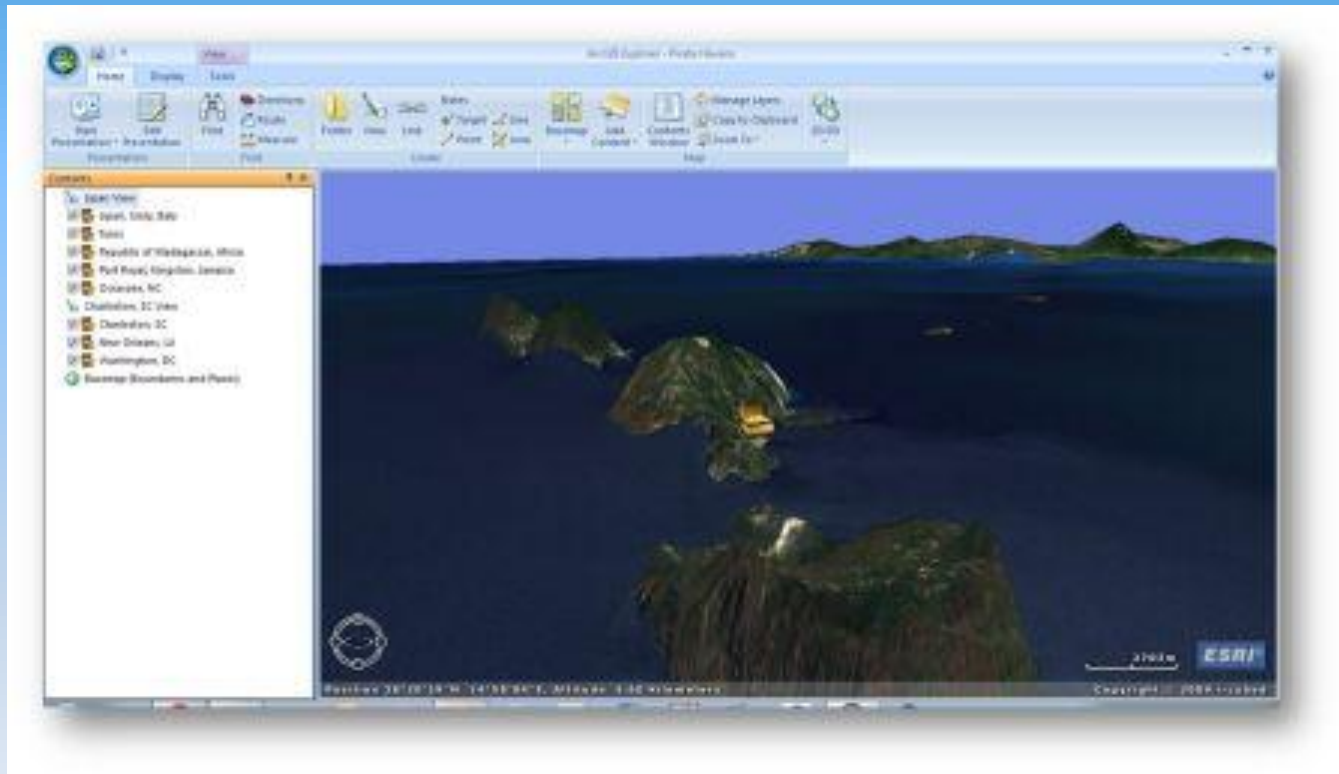
Agriculture

SOCIAL STUDIES

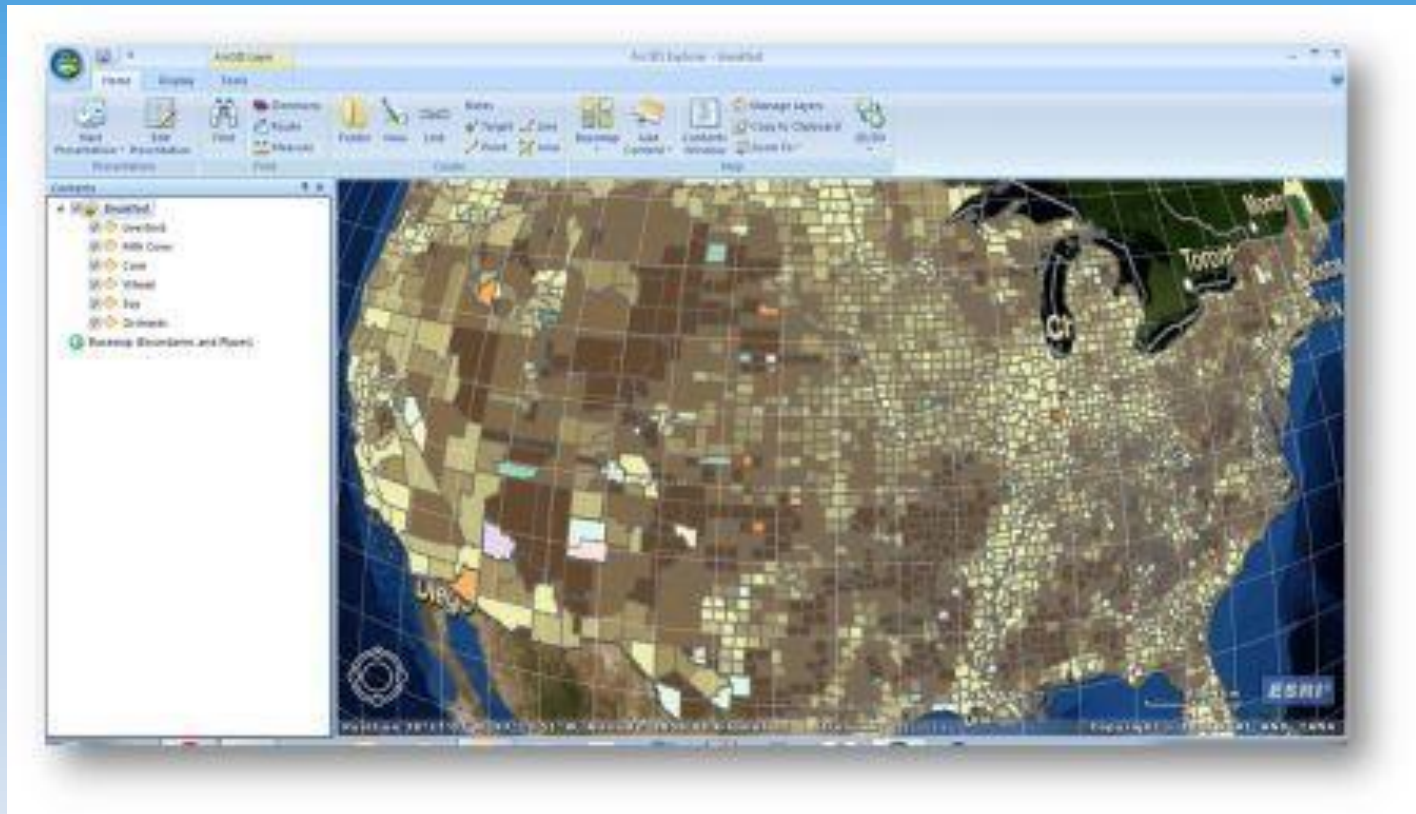
We the People: Does your vote count?



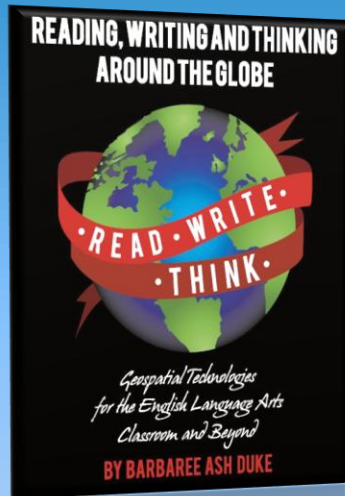
Pirate's Treasure: there's no place like home



Where Did Your Breakfast Come from?



Want to know more?

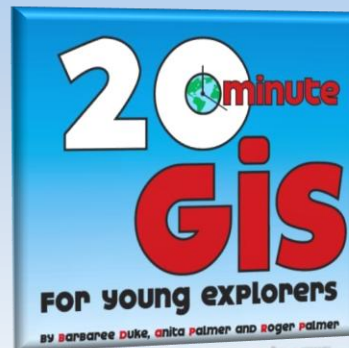


Barbaree Duke, GIS: Y.E.S.

barbareeduke@gmail.com

www.barbareeduke.com

<http://gisined.blogspot.com>



Anita Palmer, GISetc

anita@gisetc.com

www.gisetc.com



Books available at www.gisetc.com/shop.